

Internet of Edges (IoE)

Strengthening Your Cyber-Resilience

Products Listed Under



Products Listed Under



UAF-labeled products



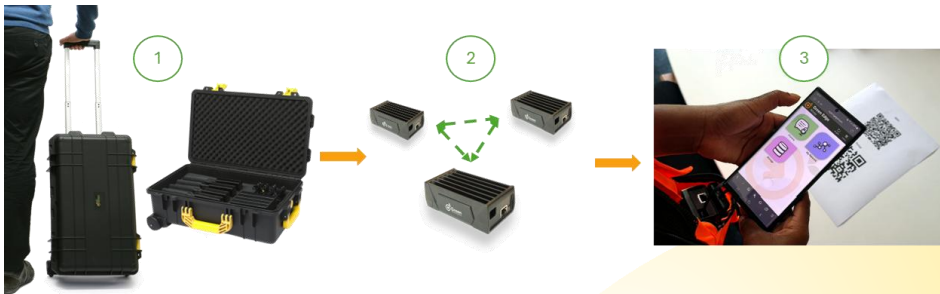
Resilience isn't just about avoiding the storm we know will strike – it's about continuing through it and coming out stronger. How can an organization bounce back from a cyberattack and continue its operations? By going beyond cybersecurity and achieving cyber resilience.

About us

Green Communications is a French SME founded in 2010, specializing in resilient digital infrastructure. Over the past 15 years, the company has established itself as a trusted supplier for leading public and private organizations in sectors such as defense, public safety, healthcare, transportation and logistics, energy, and public internet, among others.

The **Internet of Edges (IoE)** solution is the Noah's Ark of the digital world. When conventional systems are compromised by a physical or cyberattack, the IoE provides an alternative digital infrastructure that can be deployed on the fly to restore access to critical services. This ensures your organization remains operational and recovers swiftly.

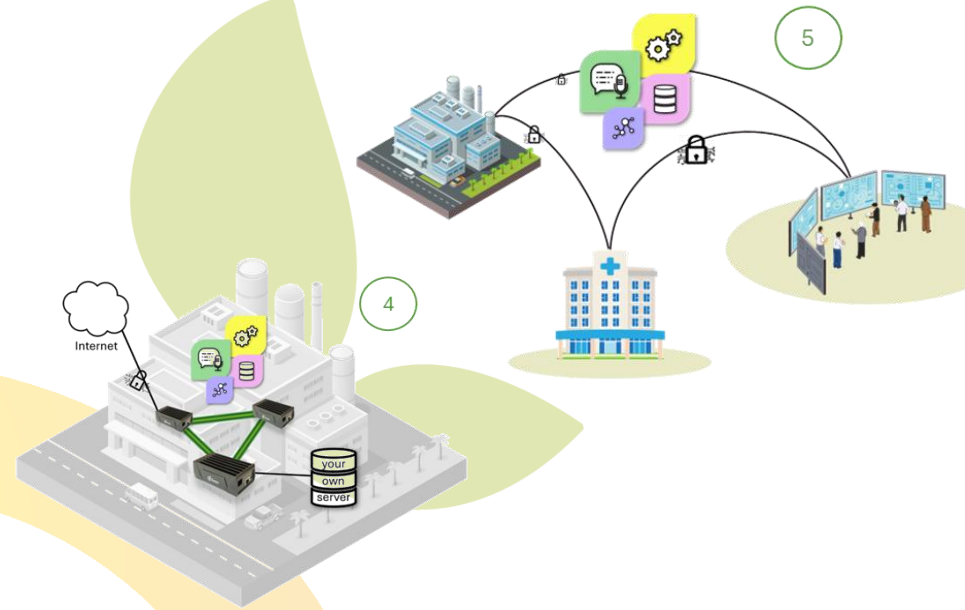
The process is very simple:



1. Deploy the IoE Devices Take the small IoE devices and distribute them throughout your organization's premises. You can deploy them immediately without planning, or you can choose to identify and pre-install hardware locations in advance. The IoE system offers flexibility for easy deployment anytime

2. Turn the IoE Devices On Simply power on the devices. They will immediately connect to one another, forming a stand-alone wireless network infrastructure that supports users across your organization.

3. Connect and Access Critical Services Connect to the Wi-Fi access point of the IoE device using a smartphone, PC, or tablet, and scan the QR code. This will take you to a local web portal featuring a range of critical digital services, including instant messaging, file sharing, voice communications, and more. From there, you can use these services to collaborate with other users within your organization.



4. Restore External Communications and Specific Services Open your Internet of Edges infrastructure to other networks and the internet through a 4G, 5G, Ethernet, or satellite gateway, utilizing secure tunnels to restore external communications. Additionally, integrate your own local or remote servers to ensure they are accessible by users within your organization.

5. Extend the Infrastructure to Multiple Sites Does your organization have multiple campuses or stakeholders located remotely? This is not a problem. The Internet of Edges infrastructure can be deployed across various sites and interconnected through the infrastructure network and secure tunnels. This ensures that the critical services of each site can synchronize and that users can communicate seamlessly through the IoE.